

Kent Kids' Wild Watch 2005

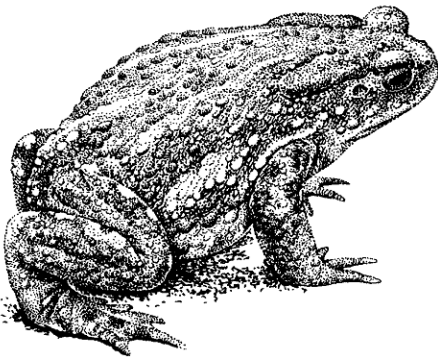
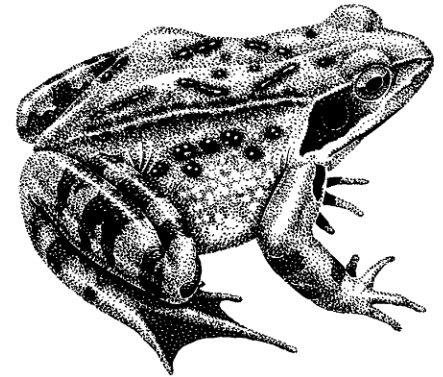
NAME..... SCHOOL..... HOME (Postcode).....

Reptiles and Amphibians

When	Where
01/01/05	School

Common Frog (*Rana temporaria*)

Frogs have wet, smooth skin that can be brown, green, or yellow in colour, with dark blotches (not stripes).



Common Toad (*Bufo bufo*)

Toads have dry and warty skin, and are a similar colour all over of various shades of brown, with a white or grey underbelly.

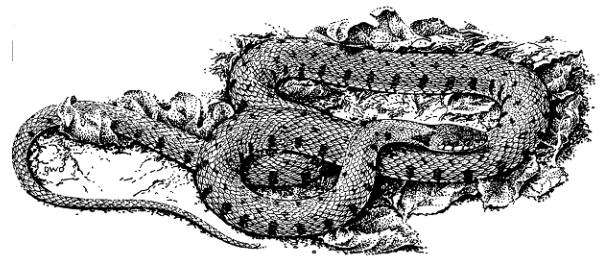
When	Where

Grass Snake (*Natrix natrix*)

- Large round snake, usually around 1.2m in length, but can be up to 2m;

- Colour can vary between olive green, brown or grey, and can have a row of black bars or marks along the sides;

- Has a white (sometimes orange or yellow) collar behind the head.



When	Where

Slow Worm (*Anguis fragilis*) *

- The slow worm is a legless lizard, and has eye lids, which snakes do not;

- Adults are smooth and shiny, and up to 50cm in length;

- Females are brown, copper or red with dark sides and sometimes a black stripe. Males are grey, brown, coppery or reddish-brown, and do not usually have stripes.

When	Where

